

Serie <b>7B</b>	Pompa tipo - Pump type <b>G271M1M1-L30AB1</b> G271M1A30G	Curva - Curve <b>M707-205</b>
--------------------	--	----------------------------------

Cod. Code <b>7002282</b>	Peso totale Total weight <b>42 Kg</b>	Materiale Construction GHISA G250 UNI-ISO 185 CAST-IRON G250 UNI-ISO 185	Girante Impeller MONOCANALE SINGLE CHANNEL
-----------------------------	--	--	--

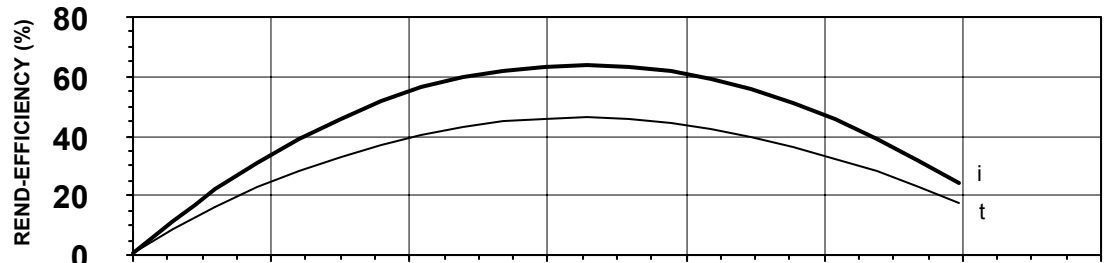
Idraulica - Hydraulic	
MANDATA DISCHARGE	<b>65 mm</b>
ASPIRAZIONE SUCTION	<b>50 mm</b>
PASSAGGIO LIBERO FREE PASSAGE	<b>30 mm</b>
DIAMETRO GIRANTE IMPELLER DIAMETER	<b>135 mm</b>
RENDIMENTO IDRAULICO HYDRAULIC EFFICIENCY	<b>63,8 %</b>

Motore - Motor	
TENSIONE NOMINALE NOMINAL VOLTAGE	<b>1ph 230V-50Hz</b>
CLASSE DI ISOLAMENTO WINDING INSULATION CLASS	<b>F</b>
VELOCITA' NOMINALE NOMINAL SPEED	<b>2850 r p m</b>
TIPO MOTORE MOTOR TYPE	<b>M271M/L - 07341</b>
POTENZA MAX ASSORBITA DALLA RETE P1 MAX ABSORBED POWER FROM MAINS P1	<b>1,5 kW</b>
POTENZA MAX IDRAULICA P2 MAX HYDRAULIC POWER P2	<b>1,1 kW</b>
FATTORE DI POTENZA (4/4) POWER FACTOR (4/4)	<b>0,95 COS φ</b>
CORRENTE DI SPUNTO STARTING CURRENT	<b>25,6 A</b>
CORRENTE MAX ASSORBITA MAX ABSORBED CURRENT	<b>7,3 A</b>

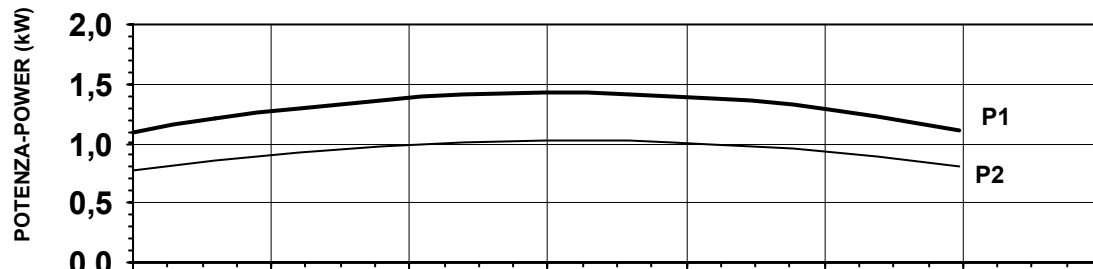
Impiego - Application	
TEMP. MAX. DEL LIQUIDO PUMPED LIQUID MAX TEMP.	<b>40 °C</b>
DENSITA' MAX. DEL LIQUIDO PUMPED LIQUID MAXIMUM DENSITY	<b>1,2 Kg/dm<sup>3</sup></b>
PROTEZIONE MECCANICA MECHANICAL PROT. DEGREE	<b>IP 68</b>
CAVO CABLE	<b>3G1,5 H07RNF</b>

Protezioni - Protections	
PROTEZIONE TERMICA THERMAL CONTROL	<input type="checkbox"/> YES
CONTROLLO INFILTRAZIONE HUMIDITY PROBE	<input type="checkbox"/> NO
EEx d IIB T4	<input type="checkbox"/> NO
MANTELLO DI RAFFREDDAMENTO COOLING JACKET	<input type="checkbox"/> NO

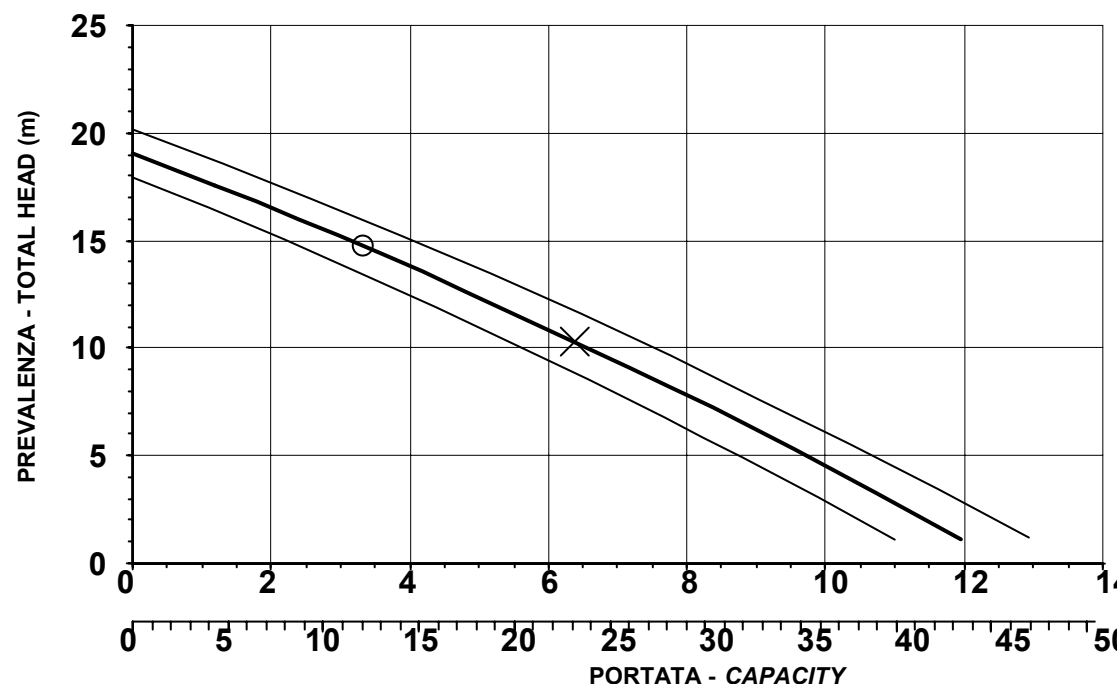
Rend. max- Best efficiency	
RENDIMENTO TOTALE TOTAL EFFICIENCY	<b>45,9 %</b>
POT. MAX ASS. DALLA RETE P1 MAX ABS. POWER FROM MAIN P1	<b>1,4 kW</b>
PREVALENZA HEAD	<b>10,3 m</b>
PORTATA CAPACITY	<b>23,0 m<sup>3</sup>/h</b>



$\eta_i$  = Rendimento idraulico  
 $\eta_i$  = Hydraulic efficiency  
 $\eta_t$  = Rendimento totale  
 $\eta_t$  = Total efficiency



**P1** = Potenza ass. dalla rete  
**P1** = Abs. power from mains  
**P2** = Potenza max idraulica  
**P2** = Max hydraulic power



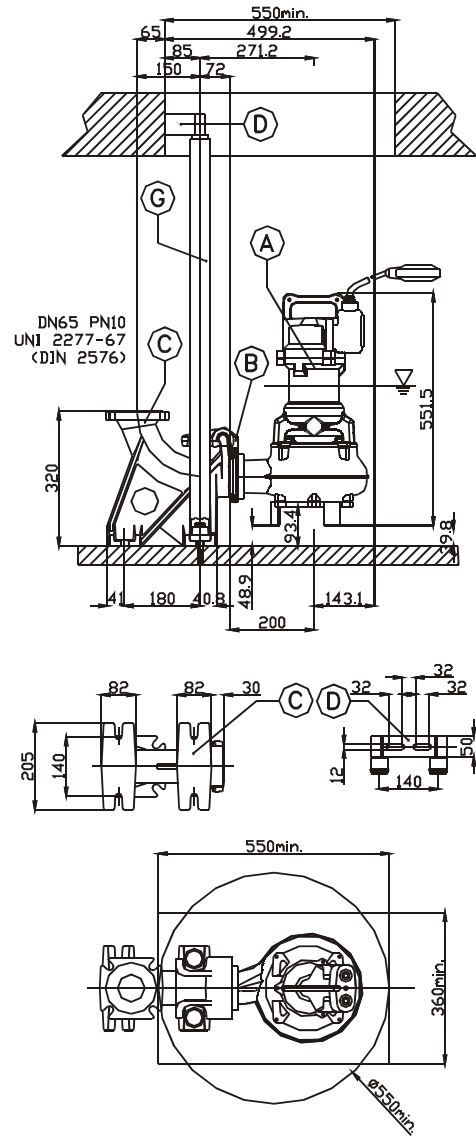
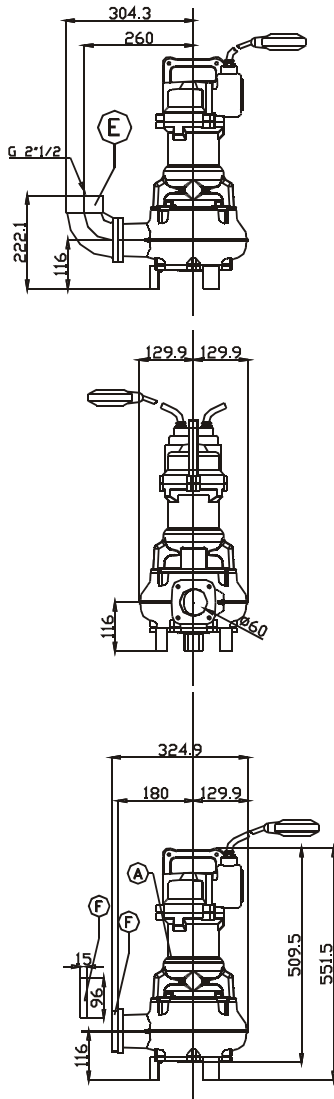
○ = Rischio di sedimentazione  
Sedimentation risk  
X = Punto max. rendimento  
Best efficiency point

CURVA CARATTERISTICA SECONDO NORME UNI ISO 9906 PERFORMANCE CURVES IN ACCORDANCE TO UNI ISO 9906	PRESTAZIONI RILEVATE CON ACQUA PURA A 20 °C OPERATING DATA OBTAINED WITH CLEAN WATER AT 20 °C
Data - Date: 01/11/2000 Codice disegno - Drawing code: 707_65_07_4 App.: A (G1)	

**DIMENSIONI  
DIMENSIONS**

**Pompa tipo - Pump type  
G271M1M1-L30AB1**

**Materiale - Construction  
GHISA G250 UNI-ISO 185  
CAST-IRON G250 UNI-ISO 185**



Pos.	Codice	Descrizione	Materiale	Peso Kg
Pos.	Code	Description	Material	Weight
<b>A</b>	-	Elettropompa Sommersibile Submersible Pump	G250 Ghisa G250 Cast-Iron	
<b>B</b>	5408254	Guarnizione DN65 Rubber joint DN65	Neoprene Neoprene	
<b>TYPE: R GPADN65/1</b>				
<b>G</b>	GCADN65_1	Controflangia accoppiamento 2 guide DN65 Double guide rail coupling flange DN65	G250 Ghisa G250 Cast-Iron	2,5
<b>H</b>	GBPACDN65	Piede d'accoppiamento 2 guide DN65 Double guide coupling feet DN65	G250 Ghisa G250 Cast-Iron	5,6
<b>I</b>	SOP2T65	Sopporto tubi superiore 2 guide 1"1/2 Double guide rail upper support 1"1/2	G250 Ghisa G250 Cast-Iron	1,4
<b>L</b>	TUBO 1"1/2	Tubo guida 1"1/2 Guide rail 1"1/2	Acciaio zincato Galvanized Steel	
<b>TYPE: S</b>				
<b>E</b>	GF2.1/2	Flangetta filettata 2"1/2 Threaded flange 2"1/2	G250 Ghisa G250 Cast-Iron	0,8
<b>F</b>	GCF2.1/2	Curva filettata 90° 2"1/2 Threaded elbow 90° 2"1/2	G250 Ghisa G250 Cast-Iron	2,5

▽ LIVELLO MINIMO DI  
SOMMERSIBILITA'  
▽ MINIMUM  
SUBMERSIBLE LEVEL

S