

Submersible Motors

PAGE: 8-3
 DATE: December 1, 2001
 SUPERSEDES: 12/1/00

8" • Encapsulated • Water Well • Six-Lead Wye-Delta

THREE-PHASE: 60HZ - 3525 RPM; 50HZ - 2900 RPM



APPLICATIONS

These motors are built for dependable operation in 8" diameter or larger wells. **Do not use motor in swimming areas.**

SPECIFICATIONS

Temperature and Time Rating: Continuous in 86°F (30°C) max. water temperature at 1/2 ft/sec. flow past motor.

Enclosure: Hermetically sealed stator, and stainless steel outer shell.

Shaft: Splined, stainless steel.

Bearings: Water-lubricated radial and thrust bearing. Thrust bearing is Kingsbury-type.

Control Panel: See footnote. ^① **SUBTROL-PLUS** available per "Electronics" section. ^②

Leads: Removable type, 13 ft. (4m) length installed, 90 degrees apart. See "8-Inch Motor Leads" page for additional leads. ^③

Rotation: Electrically reversible.

FOOTNOTES:

^①Franklin does not manufacture three-phase controls. Franklin's **Subtrol-Plus** or standard three-phase ambient-compensated quick-trip overload protection in all three legs is required for motor protection. WARRANTY IS VOID where this protection is not employed.

^②**Subtrol-Plus:** All 8" diameter three-phase submersible motors shown on this catalog page through 150 Hp are equipped with Subtrol-Plus heat sensor. See "Electronics" section.

^③WARRANTY IS VOID if Franklin supplied leads or cables are not used.

HP	KW	DOWNWARD THRUST	VOLTS	Hz	SERVICE FACTOR	MOTOR MODEL NUMBER	WIRE SIZE (AWG)
40	30	10000 LBS 45000 N	230	60	1.15	239 650 20	#8
			380	60	1.15	239 680 20	
			460/380	60/50	1.15/1.0	239 620 20	
50	37	10000 LBS 45000 N	230	60	1.15	239 651 20	#8
			380	60	1.15	239 681 20	
			460/380	60/50	1.15/1.0	239 621 20	
60	45	10000 LBS 45000 N	230	60	1.15	239 652 20	#8
			380	60	1.15	239 682 20	
			460/380	60/50	1.15/1.0	239 622 20	
75	55	10000 LBS 45000 N	230	60	1.15	239 653 20	#4
			380	60	1.15	239 683 20	
			460/380	60/50	1.15/1.0	239 623 20	
100	75	10000 LBS 45000 N	230	60	1.15	239 654 20	#4
			380	60	1.15	239 684 20	
			460/380	60/50	1.15/1.0	239 624 20	
125	93	10000 LBS 45000 N	380	60	1.15	239 185 20	#4
			460/380	60/50	1.15/1.0	239 125 20	
150	110	10000 LBS 45000 N	380	60	1.15	239 186 20	#4
			460/380	60/50	1.15/1.0	239 126 20	
175	130	10000 LBS 45000 N	380	60	1.15	239 187 40	#4
			460/380	60/50	1.15/1.0	239 127 40	
200	150	10000 LBS 45000 N	380	60	1.15	239 188 40	#4
			460/380	60/50	1.15/1.0	239 128 40	

MODIFICATIONS:

Voltage, Hertz and Hp ratings not listed here are available with a price adder. Consult factory for price and delivery.

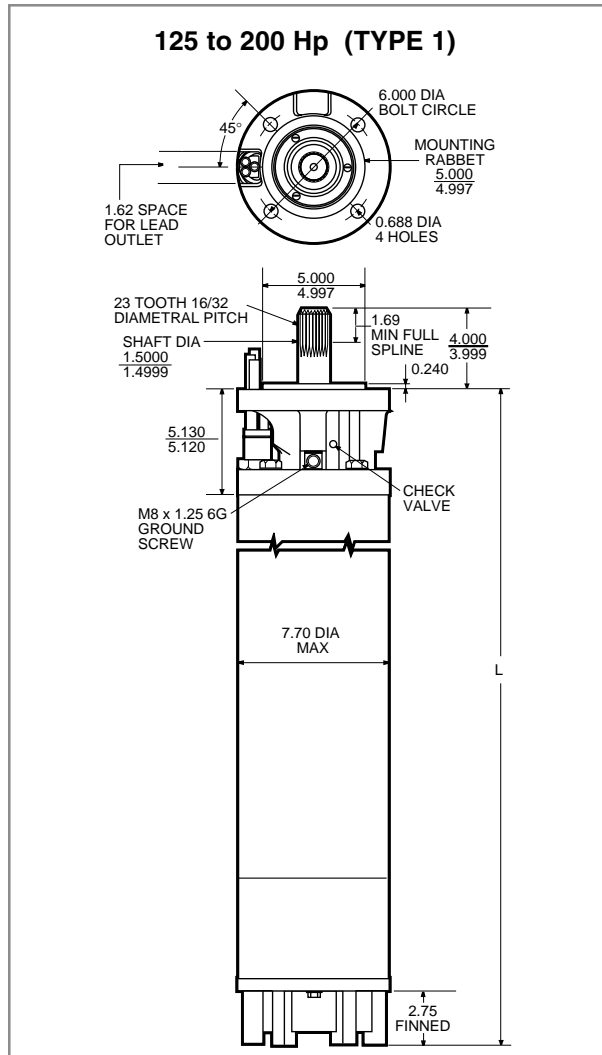
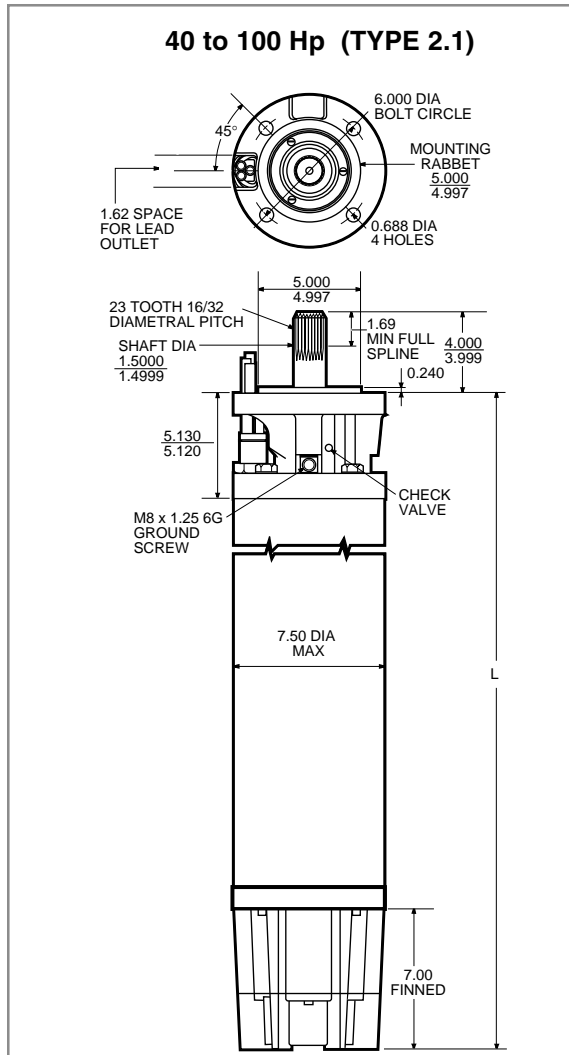
WARNING: Serious or fatal electrical shock may result from failure to follow the instructions for proper installation and use which accompany this equipment.

FOR MOUNTING DIMENSIONS SEE OPPOSITE SIDE.



Submersible Motors

8" • Encapsulated • Water Well • Six-Lead Wye-Delta



THREE PHASE MOTORS				
HP	"L"	SHIPPING WEIGHT		MOTOR CARTON SIZE
		LBS.	KGS.	
40	36.4"	330	150	17" X 9 1/4" X 51"
50	39.4"	355	161	17" X 9 1/4" X 51"
60	42.4"	385	174	17" X 9 1/4" X 51"
75	47.4"	440	199	17" X 9 1/4" X 64"
100	54.9"	540	245	17" X 9 1/4" X 64"

THREE PHASE MOTORS				
HP.	"L"	SHIPPING WEIGHT		MOTOR CARTON SIZE
		LBS.	KGS.	
125	68.8"	710	322	17" X 9 1/4" X 79"
150	77.8"	850	385	17" X 9 1/4" X 96"
175	85.8"	935	424	17" X 9 1/4" X 96"
200	94.8"	1050	476	17" X 9 1/4" X 108"

NOTE: All dimensions shown in inches.

Specifications subject to change without notice. Contact Franklin Electric if current material types are required for bid specifications.



Franklin Electric

400 East Spring Street
Bluffton, Indiana 46714

Tel: 219.824.2900

Fax: 219.824.2909

www.franklin-electric.com